

The 12V EmeryAllen Festoon retrofit lamp is an energy efficient alternative to 12V incandescent Festoon lamps. It offers similar light output to a 12V, 5W incandescent (100lm) and is suitable for use in most 12V Festoon fixtures.

<b>Base Type</b>	Festoon
<b>Material</b>	Ceramic + PC
<b>Input Voltage</b>	12V AC/DC
<b>Wattage</b>	1.0
<b>Volt-Amperes (VA)</b>	1.056W
<b>CRI</b>	90+
<b>Brightness</b>	100 lumens
<b>Lumens/Watt</b>	100
<b>Color Temperature</b>	2700K, 3000K, +
<b>Halogen Equivalent</b>	5W
<b>Beam Angle</b>	180 degrees
<b>Life</b>	25,000 hours

**Warranty** Limited Lifetime\*

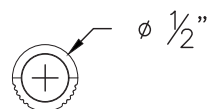
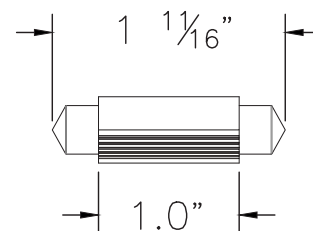
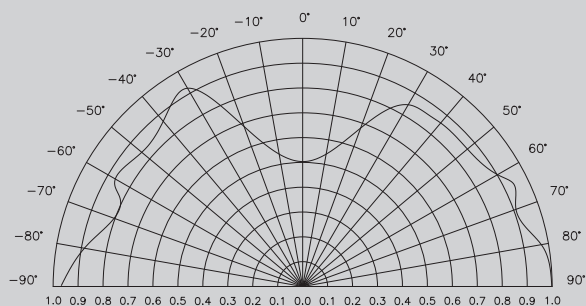
#### Available Models:

- EA-FEST-1.0W-279F (2700K)
- EA-FEST-1.0W-309F (3000K)

#### Dimming:

- Dimmable with most magnetic and electronic LED compatible transformers.
- Dimmable with most MLV and ELV dimmers.

#### Light Distribution



DAMP LOCATION & ENCLOSED FIXTURE