

# A19 7.0W LED FILAMENT

## SPECIFICATIONS & TECHNICAL DATA

The 120V EmeryAllen A19 retrofit lamp is an energy efficient alternative to incandescent E26 base lamps. It offers similar light output to a 120V, 80W incandescent (800lm) and is suitable for use in most 120V E26 fixtures.

<b>Base Type</b>	E26
<b>Material</b>	Glass + Aluminum
<b>Input Voltage</b>	100-130V AC
<b>Wattage</b>	6.63
<b>Volt-Amperes (VA)</b>	8.27
<b>CRI</b>	95.1
<b>Brightness</b>	753 lumens
<b>Lumens/Watt</b>	113.47
<b>Color Temperature</b>	2700K & 3000K
<b>R9</b>	67
<b>Halogen Equivalent</b>	80W
<b>Beam Angle</b>	360 degrees
<b>Life</b>	15,000 hours
<b>Warranty</b>	Limited Lifetime*

### Available Models:

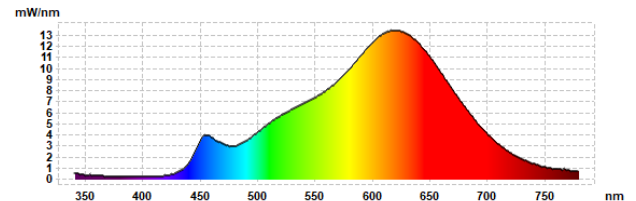
- EA-A19-7.0W-E26-2790-D (2700K)
- EA-A19-7.0W-E26-3090-D (3000K)

### Dimming:

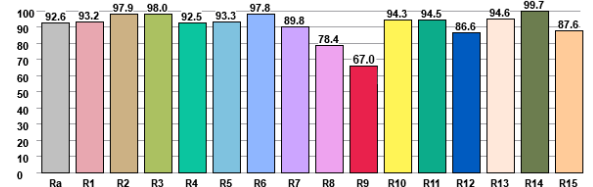
Dimmable with most incandescent and LED dimmers.



## SPECTRAL DISTRIBUTION



## CRI VALUES R1-R15



## TM30 VECTOR

