

# LG4 1.5W

## SPECIFICATIONS & TECHNICAL DATA

The 12V EmeryAllen Linear G4 blade lamp is an energy efficient alternative to incandescent linear G4 base lamps. It offers similar light output to a 12V, 10W incandescent (150lm) and is suitable for use in most 12V linear G4 fixtures.

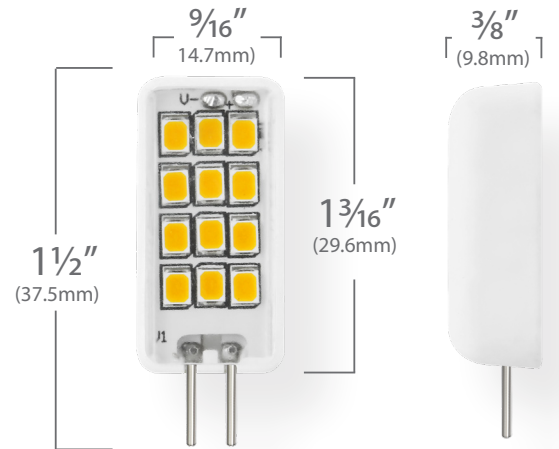
<b>Base Type</b>	G4
<b>Material</b>	Ceramic + PC
<b>Input Voltage</b>	12V AC/DC
<b>Wattage</b>	1.51
<b>Volt-Amperes (VA)</b>	2.31
<b>CRI</b>	92.1
<b>Brightness</b>	168 lumens
<b>Lumens/Watt</b>	111.2
<b>Color Temperature</b>	2700K, 3000K
<b>R9</b>	57.4
<b>Halogen Equivalent</b>	10W
<b>Beam Angle</b>	180 degrees
<b>Life</b>	36,000 hours
<b>Warranty</b>	Limited Lifetime*

### Available Models:

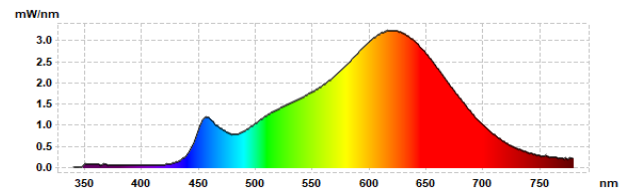
- EA-LG4-1.5W-001-279F (2700K)
- EA-LG4-1.5W-001-309F (3000K)

### Dimming:

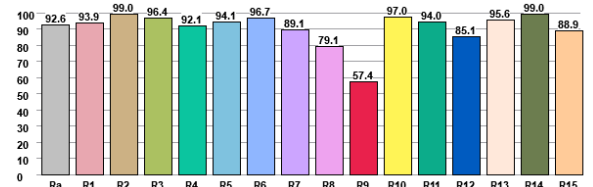
- Dimmable with most magnetic and electronic LED compatible transformers
- Dimmable with most MLV and ELV dimmers



## SPECTRAL DISTRIBUTION



## CRI VALUES R1-R15



## TM30 VECTOR

