

# S21 3.5W LED FILAMENT

## SPECIFICATIONS & TECHNICAL DATA

The 120V EmeryAllen S21 retrofit lamp is an energy efficient alternative to incandescent E26 base lamps. It offers similar light output to a 12V, 40W incandescent (280lm) and is suitable for use in most 12V E26 fixtures.

<b>Base Type</b>	E26
<b>Material</b>	Glass + Aluminum
<b>Input Voltage</b>	12V AC/DC
<b>Wattage</b>	3.35
<b>Volt-Amperes (VA)</b>	4.78
<b>CRI</b>	91.9
<b>Brightness</b>	323.5 lumens
<b>Lumens/Watt</b>	96.31
<b>Color Temperature</b>	2700K
<b>R9</b>	54
<b>Halogen Equivalent</b>	40W
<b>Beam Angle</b>	360 degrees
<b>Life</b>	15,000 hours
<b>Warranty</b>	Limited Lifetime*

### Available Models:

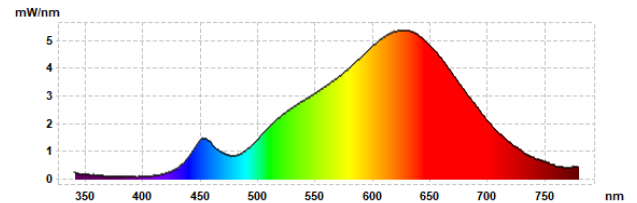
- EA-S21-3.5W-12V-E26-2790-D (2700K)

### Dimming:

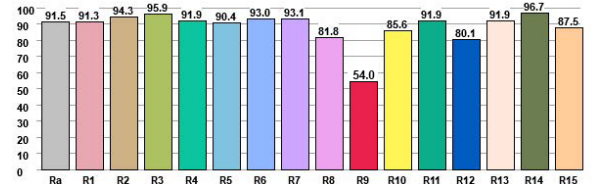
- Dimmable with most magnetic LED compatible transformers
- Dimmable with most MLV dimmers



## SPECTRAL DISTRIBUTION



## CRI VALUES R1-R15



## TM30 VECTOR

