

G14 5.0W

LED FILAMENT

SPECIFICATIONS & TECHNICAL DATA

The 120V EmeryAllen G14 retrofit lamp is an energy efficient alternative to incandescent E12 base lamps. It offers similar light output to a 120V, 25W incandescent (460lm) and is suitable for use in most 120V E12 fixtures.

Base Type	E12
Material	Glass + Aluminum
Input Voltage	100-130V AC
Wattage	5.0
Volt-Amperes (VA)	5.86
CRI	90.7
Brightness	460 lumens
Lumens/Watt	92
Color Temperature Range	2700K & 3000K
R9	49.4
Halogen Equivalent	25W
Beam Angle	360 degrees
Life	15,000 hours
Warranty	Limited Lifetime*

Available Models:

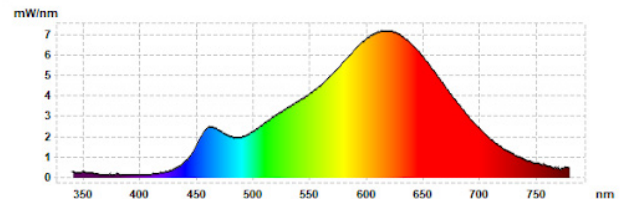
- EA-G14-5.0W-E12-2790-D (2700K)
- EA-G14-5.0W-E12-3090-D (3000K)

Dimming:

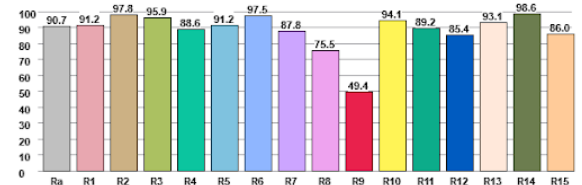
Dimmable with most incandescent and LED dimmers.



SPECTRAL DISTRIBUTION



CRI VALUES R1-R15



TM30 VECTOR

