

T10 6.5W 130 LED FILAMENT

SPECIFICATIONS & TECHNICAL DATA

The 120V EmeryAllen T10 retrofit lamp is an energy efficient alternative to incandescent E26 base lamps. It offers similar light output to a 120V, 70W incandescent (610lm) and is suitable for use in 120V E26 fixtures that have ample room.

Base Type	E26
Material	Glass + Aluminum
Input Voltage	100-130V AC
Wattage	6.2
Volt-Amperes (VA)	7.72
CRI	92
Brightness	610 lumens
Lumens/Watt	98.38
Color Temperature	2700K & 3000K
R9	42.3
Halogen Equivalent	70W
Beam Angle	360 degrees
Life	15,000 hours
Warranty	Limited Lifetime*

Available Models:

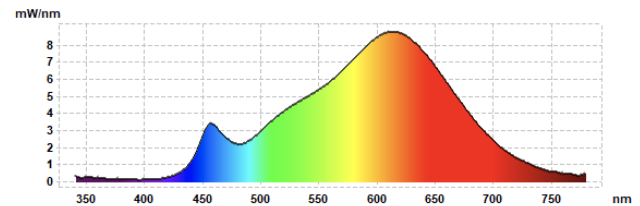
- EA-T10-6.5W-E26-130-2790W-D (2700K)
- EA-T10-6.5W-E26-130-3090W-D (3000K)

Dimming:

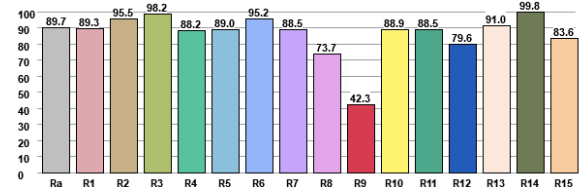
Dimmable with most incandescent and LED dimmers.



SPECTRAL DISTRIBUTION



CRI VALUES R1-R15



TM30 VECTOR

