

T6 4.0W LED FILAMENT

SPECIFICATIONS & TECHNICAL DATA

The 120V EmeryAllen T6 retrofit lamp is an energy efficient alternative to incandescent E12 base lamps. It offers similar light output to a 120V, 40W incandescent (400lm) and is suitable for use in most 120V E12 fixtures.

Base Type	E12
Material	Glass + Aluminum
Input Voltage	100-130V AC
Wattage	4.0
Volt-Amperes (VA)	4.94
CRI	88.7
Brightness	400 lumens
Lumens/Watt	100
Color Temperature	2700K & 3000K
R9	41.4
Halogen Equivalent	40W
Beam Angle	360 degrees
Life	15,000 hours
Warranty	Limited Lifetime*

Available Models:

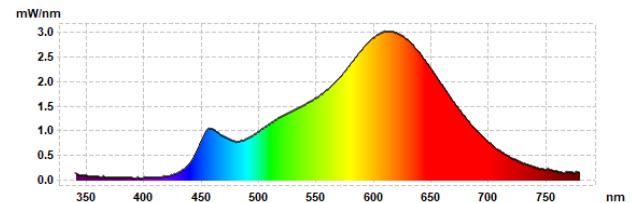
- EA-T6-4.0W-E12-2790-D (2700K)
- EA-T6-4.0W-E12-3090-D (3000K)

Dimming:

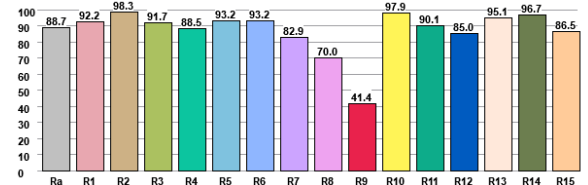
Dimmable with most incandescent and LED dimmers.



SPECTRAL DISTRIBUTION



CRI VALUES R1-R15



TM30 VECTOR

